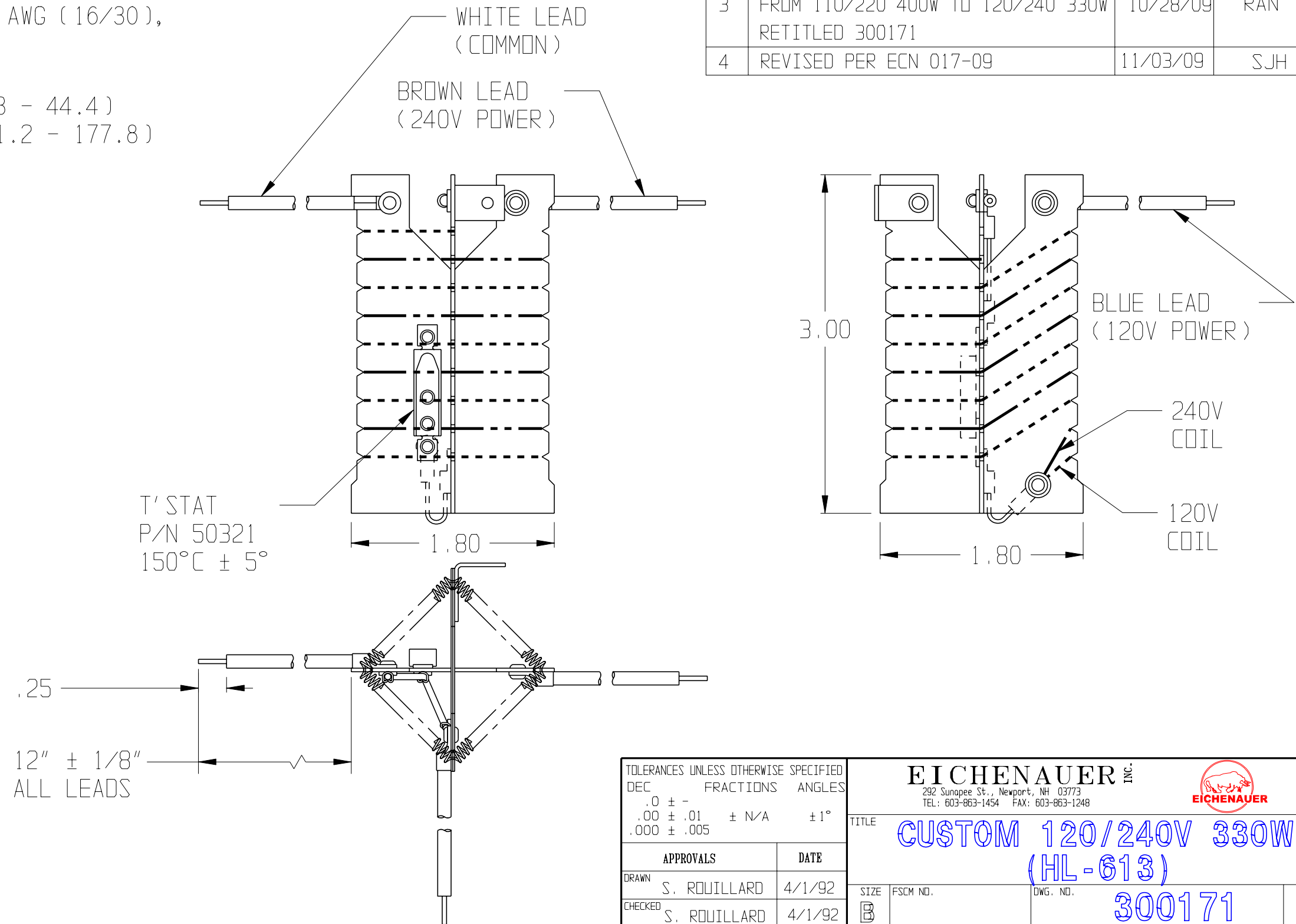


THIS DOCUMENT AND THE DATA DISCLOSED HEREIN OR HEREWITH IS NOT TO BE REPRODUCED, USED, OR DISCLOSED IN WHOLE OR IN PART TO ANYONE WITHOUT THE PERMISSION OF HARTFORD EICHENAUER, INC.

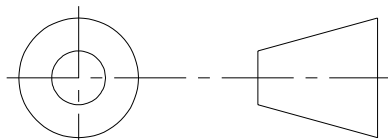
NOTES:


1. ALL DIMENSIONS ARE IN INCHES AND [mm].
2. MICA: 1.00 mm THICK.
3. LEAD WIRE: UL STYLE 1015, 18 AWG (16/30), 105°C, 600V.
4. ELECTRICAL RATING:  
 120V 330W 42.3Ω±5% (40.3 - 44.4)  
 240V 330W 169.3Ω±5% (161.2 - 177.8)

REVISIONS			
LTR/NO	DESCRIPTION	DATE	APPROVED
A	INITIAL RELEASE	4/1/92	SDR
B	110/220, 400W WAS 110/220, 200W	9/25/92	SDR
C	BROWN LEAD WAS RED	11/24/92	SDR
D	ADD MICA THICKNESS; T' STAT FROM 110°C TO 150°C	4/29/93	SDR
E	ROTATED WIRES 90°	8/18/93	RLD
3	FROM 110/220 400W TO 120/240 330W RETITLED 300171	10/28/09	RAN
4	REVISED PER ECN 017-09	11/03/09	SJH



THIRD ANGLE PROJECTION



TOLERANCES UNLESS OTHERWISE SPECIFIED		<b>EICHENAUER INC.</b> 292 Sunapee St., Newport, NH 03773 TEL: 603-863-1454 FAX: 603-863-1248					
DEC	FRACTIONS					ANGLES	
.0 ± -		± 1°	TITLE <b>CUSTOM 120/240V 330W (HL-613)</b>				
.00 ± .01	± N/A						
.000 ± .005							
APPROVALS		DATE		SIZE	FSCM NO.	DWG. NO.	REV.
DRAWN S. ROUILLARD		4/1/92		B		300171	4
CHECKED S. ROUILLARD		4/1/92		SCALE	SHEET		
				2:1	1 of 1		