

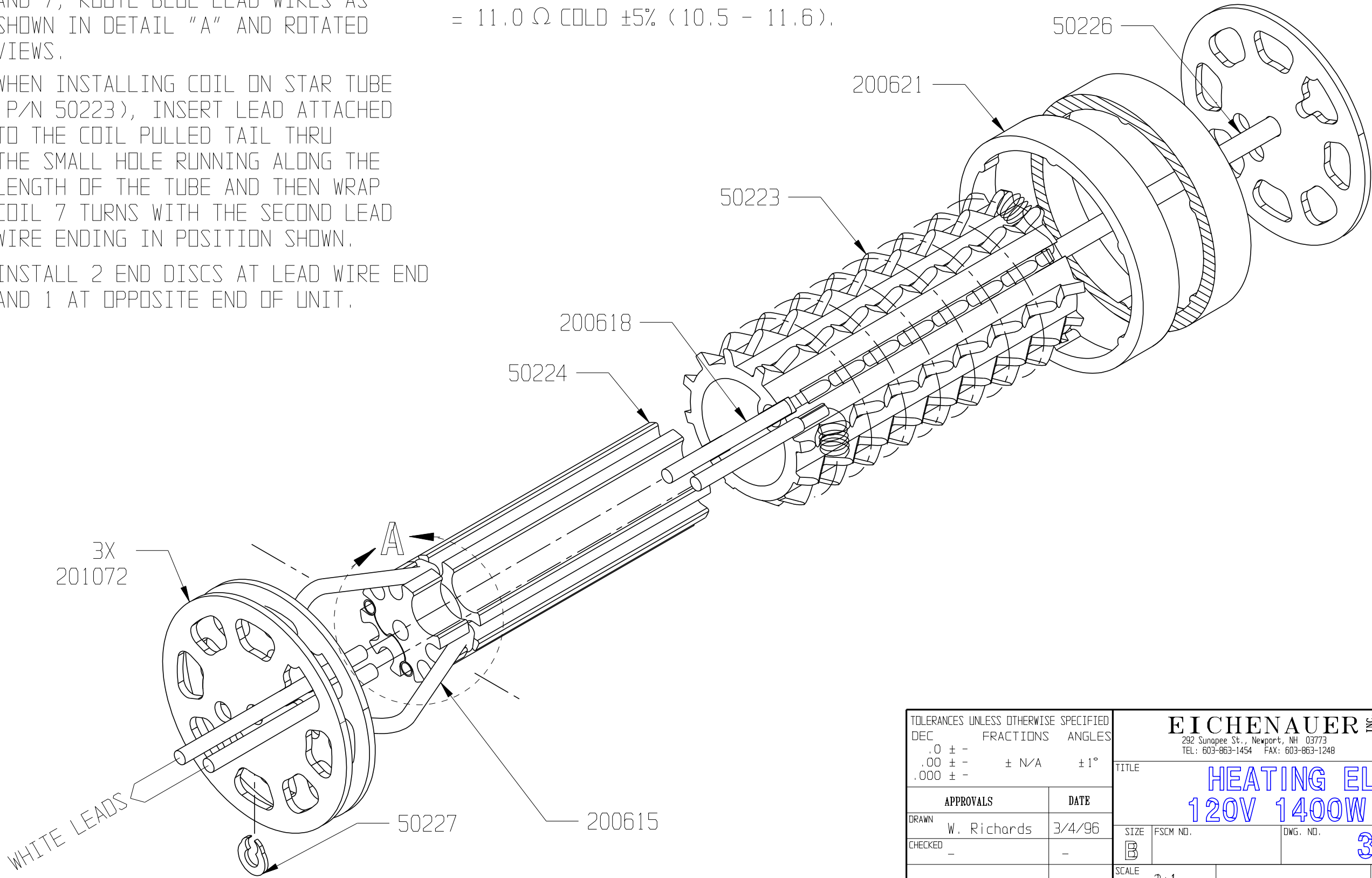
THIS DOCUMENT AND THE DATA DISCLOSED HEREIN OR HEREWITH IS NOT TO BE REPRODUCED, USED, OR DISCLOSED IN WHOLE OR IN PART TO ANYONE WITHOUT THE PERMISSION OF HARTFORD EICHENAUER, INC.


NOTES:

1. WHEN INSTALLING COILS ON TUBE (P/N 50224), USE SLOTS 2, 3, 6, AND 7; ROUTE BLUE LEAD WIRES AS SHOWN IN DETAIL "A" AND ROTATED VIEWS.
2. WHEN INSTALLING COIL ON STAR TUBE (P/N 50223), INSERT LEAD ATTACHED TO THE COIL PULLED TAIL THRU THE SMALL HOLE RUNNING ALONG THE LENGTH OF THE TUBE AND THEN WRAP COIL 7 TURNS WITH THE SECOND LEAD WIRE ENDING IN POSITION SHOWN.
3. INSTALL 2 END DISCS AT LEAD WIRE END AND 1 AT OPPOSITE END OF UNIT.

4. OUTER TUBE (P/N 50323) SHALL BE STAMPED WITH "51788 120V MA526".
5. ELECTRICAL RATING: 120V 1400W
MOTOR COIL (P/N 200615) WITH BLUE LEADS
= 110.0 Ω COLD \pm 5% (104.5 - 115.5).
HEATER COIL (P/N 200618) WITH WHITE LEADS
= 11.0 Ω COLD \pm 5% (10.5 - 11.6).

REVISIONS			
LTR/NO	DESCRIPTION	DATE	APPROVED
1	PRODUCTION RELEASE	3/4/96	WR
2	3X 201072 WAS 2X 50225 ECN 039-98	5/4/98	SJH



TOLERANCES UNLESS OTHERWISE SPECIFIED DEC FRACTIONS ANGLES .0 ± - .00 ± - ± N/A ± 1° .000 ± -			EICHENAUER INC. 292 Sunapee St., Newport, NH 03773 TEL: 603-863-1454 FAX: 603-863-1248				
APPROVALS			DATE			TITLE <div>HEATING ELEMENT</div> <div>120V 1400W MA-526</div>	
DRAWN W. Richards			3/4/96			REV.	
CHECKED -			-			2	
SCALE 2:1			SIZE B FSCM NO. DWG. NO. 300196			SHEET 1 of 1	