

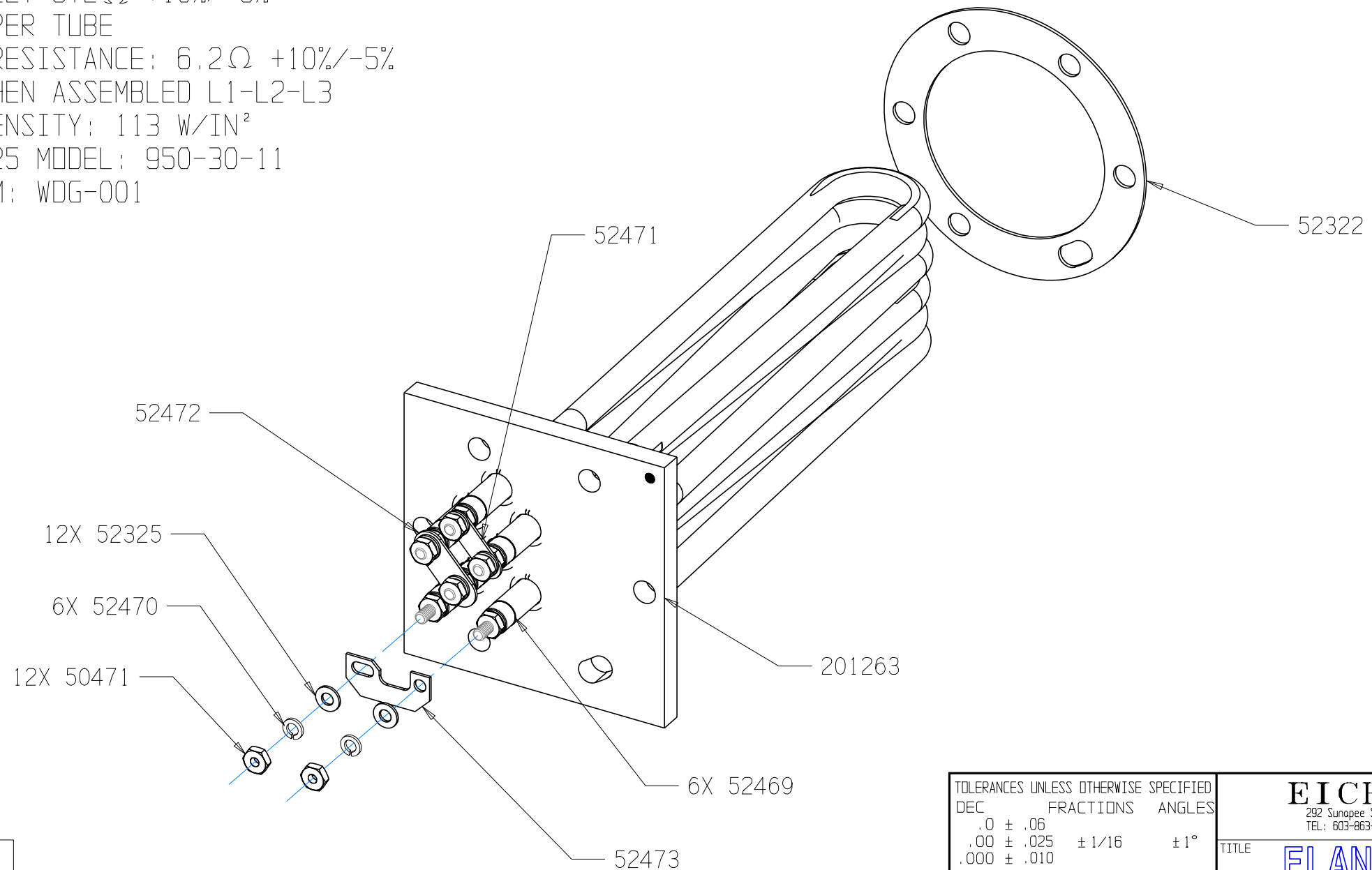
THIS DOCUMENT AND THE DATA DISCLOSED HEREIN OR HEREWITH IS NOT TO BE REPRODUCED, USED, OR DISCLOSED IN WHOLE OR IN PART TO ANYONE WITHOUT THE PERMISSION OF HARTFORD EICHENAUER, INC.

9 | UL # REVISED PER ECN 010-13 | 6/18/13 | SJH

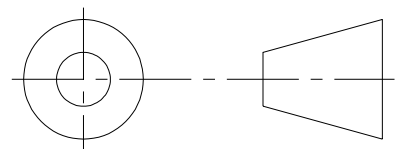
REVISIONS			
LTR/NO	DESCRIPTION	DATE	APPROVED
1	PRODUCTION RELEASE	01/19/01	SJH
2	MARKING REVISED PER ECN 021-01	07/31/01	SJH
3	ECN 033-01 (SHEET 2)	10/16/01	SJH
4	NOTES REVISED PER ECN 002-02	01/31/02	SJH
5	REVISED & REDRAWN PER ECN 024-02	07/30/02	SJH
6	ECN 018-03	8MAY03	JB
7	REVISED & REDRAWN PER ECN 002-05	01/24/05	SJH
8	REVISED PER ECN 045-10	1/04/11	SJH

NOTES:


1. DIMENSIONS IN INCHES
2. FLANGE MATERIAL: MILD STEEL
3. SHEATH MATERIAL: STAINLESS STEEL
4. TERMINAL PINS: 10-32 WITH NUTS AND WASHERS AS SHOWN. TOP NUTS TIGHTENED TO 25 IN-LBS
5. COLD RESISTANCE:  $9.2\Omega \pm 10\%/-5\%$  (9.0 - 10.3) PER TUBE
6. BUSS TO BUSS RESISTANCE:  $6.2\Omega \pm 10\%/-5\%$  (5.9 - 6.8) WHEN ASSEMBLED L1-L2-L3
7. SHEATH WATT DENSITY: 113 W/IN<sup>2</sup>
8. UL FILE: E76225 MODEL: 950-30-11
9. WIRING DIAGRAM: WDG-001



THIRD ANGLE PROJECTION



TOLERANCES UNLESS OTHERWISE SPECIFIED	
DEC	FRACTIONS ANGLES
.0 ± .06	
.00 ± .025	± 1/16 ± 1°
.000 ± .010	
APPROVALS	DATE
DRAWN S. HEBERT	01/19/01
CHECKED	

<b>EICHENAUER INC.</b> 292 Sunapee St., Newport, NH 03773 TEL: 603-863-1454 FAX: 603-863-1248		
<b>FLANGED BOILER HEATER</b> <b>240V 18KW 3PH</b>		
SIZE	FSCM NO.	DWG. NO. <b>300395H</b>
SCALE	1:2	SHEET <b>1 of 2</b>
		REV. <b>9</b>

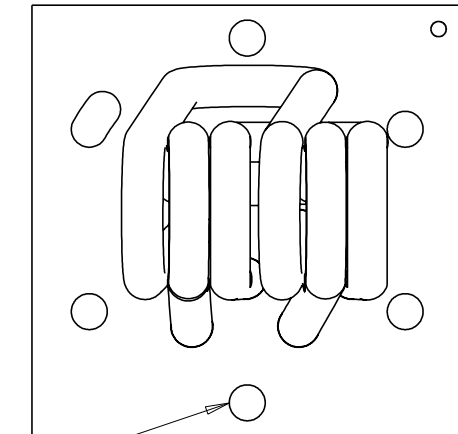
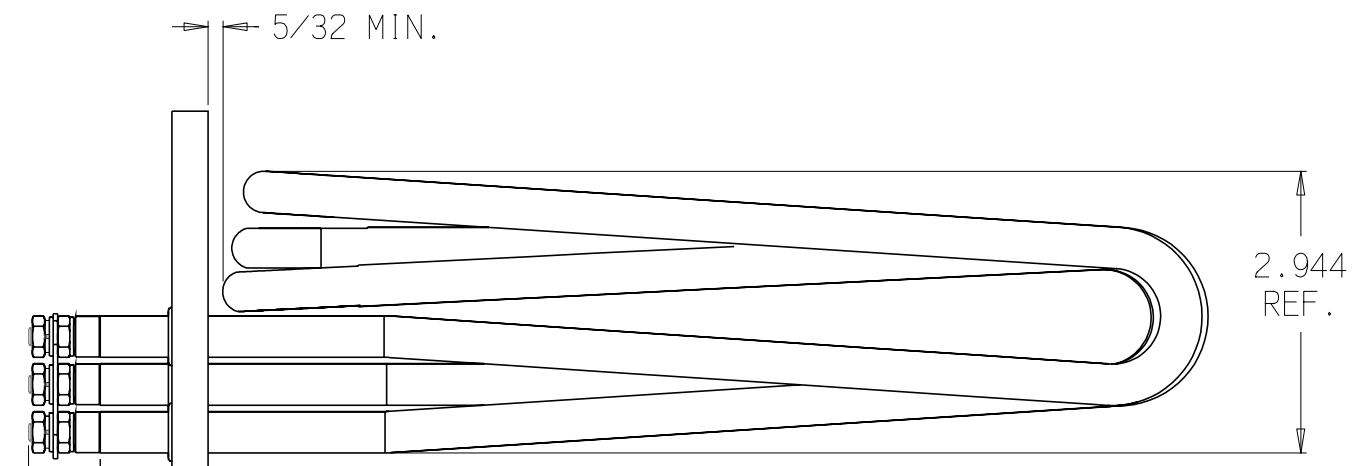
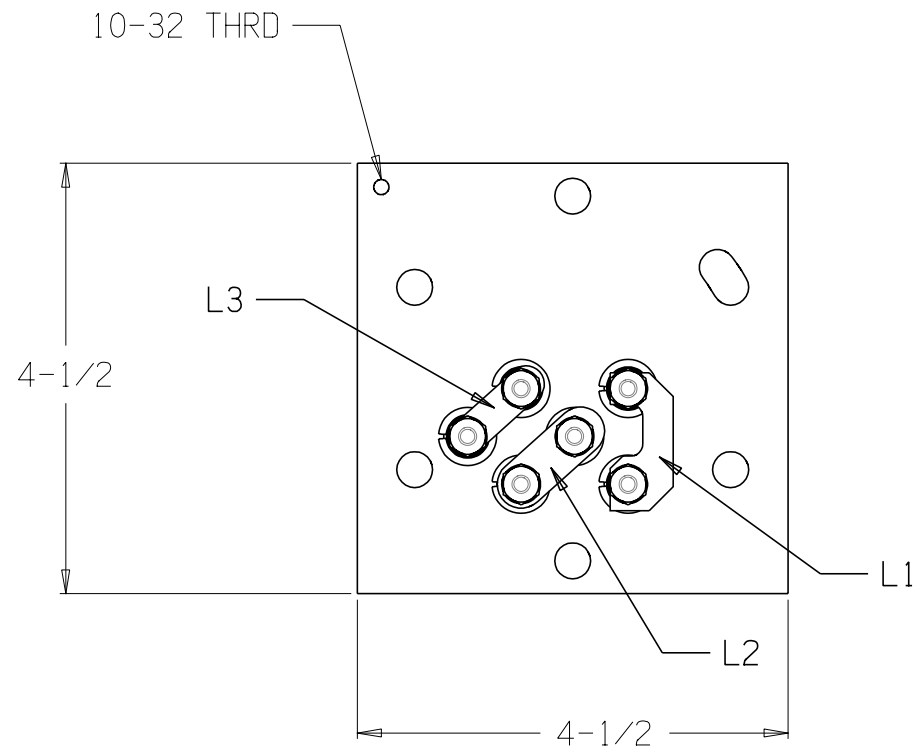
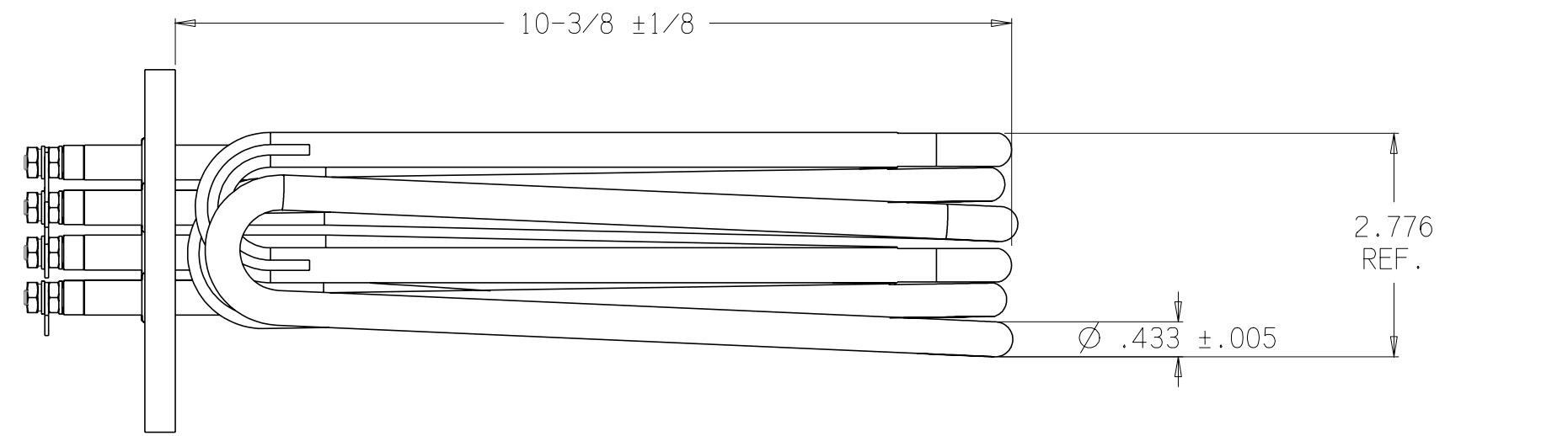
THIS DOCUMENT AND THE DATA DISCLOSED HEREIN OR HEREWITH IS NOT TO BE REPRODUCED, USED, OR DISCLOSED IN WHOLE OR IN PART TO ANYONE WITHOUT THE PERMISSION OF HARTFORD EICHENAUER, INC.

8	REVISED PER ECN 045-10	1/04/11	SJH
9	UL # REVISED PER ECN 010-13	6/18/13	SJH

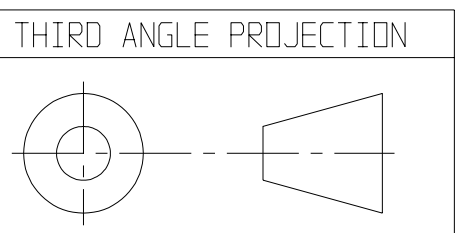
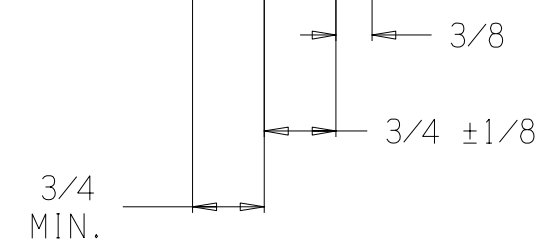
REVISIONS			
LTR/NO	DESCRIPTION	DATE	APPROVED
1	PRODUCTION RELEASE	01/19/01	SJH
2	MARKING REVISED PER ECN 021-01	07/31/01	SJH
3	ECN 033-01 (SHEET 2)	10/16/01	SJH
4	NOTES REVISED PER ECN 002-02	01/31/02	SJH
5	REVISED & REDRAWN PER ECN 024-02	07/30/02	SJH
6	ECN 018-03	8MAY03	JB
7	REVISED & REDRAWN PER ECN 002-05	01/24/05	SJH

NOTES:

- DIMENSIONS IN INCHES
- FLANGE MATERIAL: MILD STEEL
- SHEATH MATERIAL: STAINLESS STEEL
- TERMINAL PINS: 10-32 WITH NUTS AND WASHERS AS SHOWN. TOP NUTS TIGHTENED TO 25 IN-LBS
- COLD RESISTANCE:  $9.2\Omega +10\%/-5\%$  (9.0 - 10.3) PER TUBE
- BUSS TO BUSS RESISTANCE:  $6.2\Omega +10\%/-5\%$  (5.9 - 6.8) WHEN ASSEMBLED L1-L2-L3
- SHEATH WATT DENSITY: 113 W/IN<sup>2</sup>
- UL FILE: E76225 MODEL: 950-30-11
- WIRING DIAGRAM: WDG-001



(6) 3/8 HOLES ON 3-13/16 DIA. BC



TOLERANCES UNLESS OTHERWISE SPECIFIED	
DEC	FRACTIONS ANGLES
.0 ± .06	
.00 ± .025	± 1/16 ± 1°
.000 ± .010	
APPROVALS	DATE
DRAWN S. HEBERT	01/19/01
CHECKED	

**EICHENAUER INC.**  
 292 Sunapee St., Newport, NH 03773  
 TEL: 603-863-1454 FAX: 603-863-1248

TITLE: **FLANGED BOILER HEATER**  
**240V 18KW 3PH**

SIZE: B FSCM NO. DWG. NO. 300395H REV. 9

SCALE: 1:2 SHEET: 2 of 2