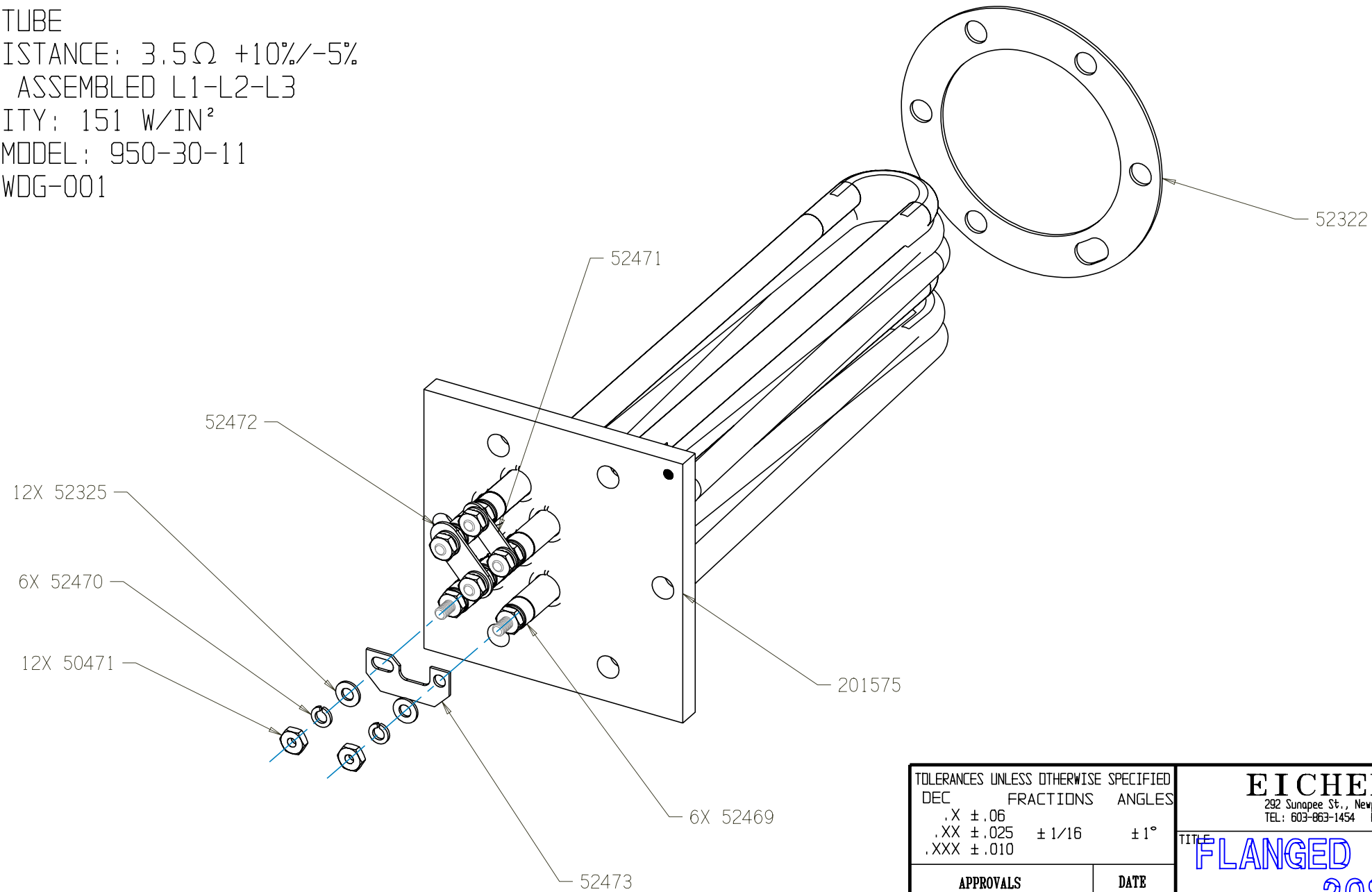


THIS DOCUMENT AND THE DATA DISCLOSED HEREIN OR HEREWITH IS NOT TO BE REPRODUCED, USED, OR DISCLOSED IN WHOLE OR IN PART TO ANYONE WITHOUT THE PERMISSION OF EICHENAUER, INC.

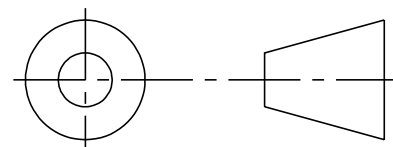
REVISIONS			
LTR/NO	DESCRIPTION	DATE	APPROVED
A	QUOTATION RELEASE	3/23/03	SJH
1	PRODUCTION RELEASE (WAS P1100)	5/13/03	SJH
2	REVISED PER ECN 017-16	10/14/16	SJH

NOTES:

1. DIMENSIONS IN INCHES
2. FLANGE MATERIAL: STEEL
3. SHEATH MATERIAL: STAINLESS STEEL
4. TERMINAL PINS: 10-32 WITH NUTS AND WASHERS AS SHOWN. TOP NUTS TIGHTENED TO 25 IN-LBS TORQUE
5. COLD RESISTANCE: $5.3\Omega \pm 10\%/-5\%$ (5.0 - 5.8) PER TUBE
6. BUSS TO BUSS RESISTANCE: $3.5\Omega \pm 10\%/-5\%$ (3.4 - 3.9) WHEN ASSEMBLED L1-L2-L3
7. SHEATH WATT DENSITY: 151 W/IN²
8. UL FILE: E76225 MODEL: 950-30-11
9. WIRING DIAGRAM: WDG-001



THIRD ANGLE PROJECTION



TOLERANCES UNLESS OTHERWISE SPECIFIED		
DEC	FRACTIONS	ANGLES
.X ± .06		
.XX ± .025	± 1/16	± 1°
.XXX ± .010		

EICHENAUER INC.
 292 Sunapee St., Newport, NH 03773
 TEL: 603-863-1454 FAX: 603-863-1248



FLANGED IMMERSION HEATER
208V 24KW 3PH

APPROVALS	DATE
DRAWN S. HEBERT	5/13/03
CHECKED	

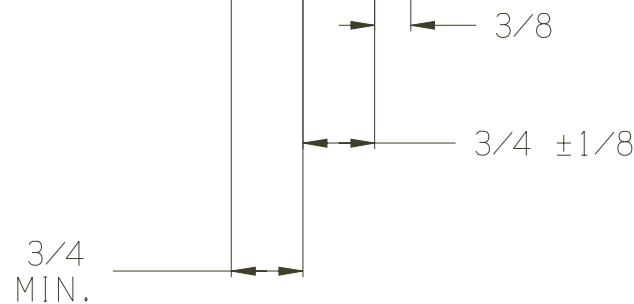
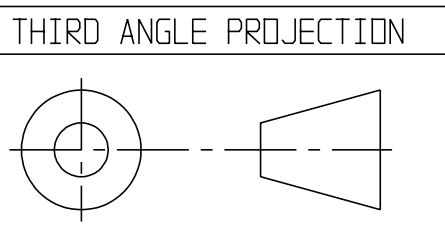
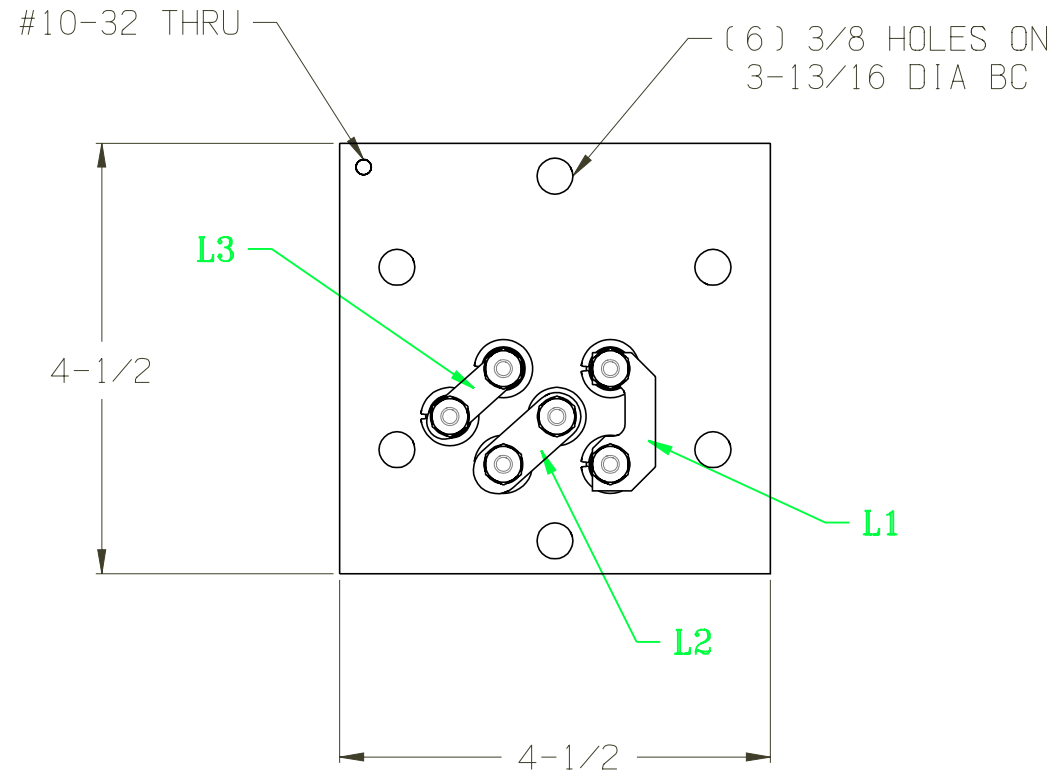
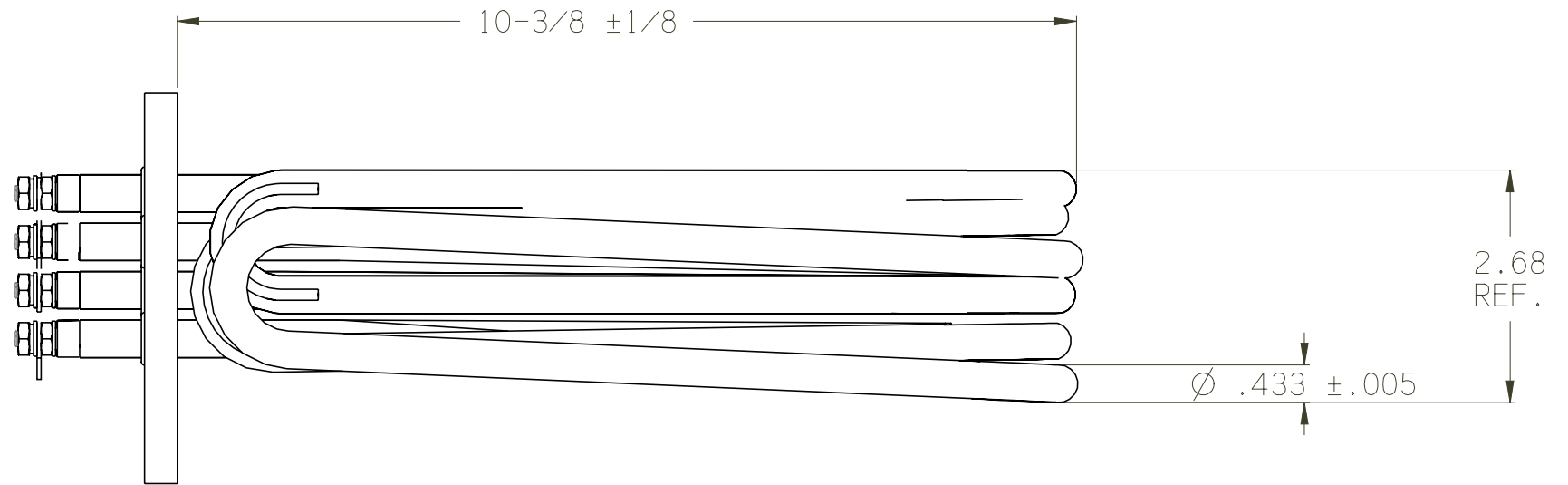
SIZE B	FSCM NO.	DWG. NO. 300474H	REV. 2
SCALE 1:1	SHEET 1 of 2		


THIS DOCUMENT AND THE DATA DISCLOSED HEREIN OR HEREWITH IS NOT TO BE REPRODUCED, USED, OR DISCLOSED IN WHOLE OR IN PART TO ANYONE WITHOUT THE PERMISSION OF EICHENAUER, INC.

REVISIONS			
LTR/NO	DESCRIPTION	DATE	APPROVED
A	QUOTATION RELEASE	3/23/03	SJH
1	PRODUCTION RELEASE (WAS P1100)	5/13/03	SJH
2	REVISED PER ECN 017-16	10/14/16	SJH

NOTES:

1. DIMENSIONS IN INCHES
2. FLANGE MATERIAL: STEEL
3. SHEATH MATERIAL: STAINLESS STEEL
4. TERMINAL PINS: 10-32 WITH NUTS AND WASHERS AS SHOWN. TOP NUTS TIGHTENED TO 25 IN-LBS TORQUE
5. COLD RESISTANCE: $5.3\Omega \pm 10\%/-5\%$ (5.0 - 5.8) PER TUBE
6. BUSS TO BUSS RESISTANCE: $3.5\Omega \pm 10\%/-5\%$ (3.4 - 3.9) WHEN ASSEMBLED L1-L2-L3
7. SHEATH WATT DENSITY: 151 W/IN²
8. UL FILE: E76225 MODEL: 950-30-11
9. WIRING DIAGRAM: WDG-001



TOLERANCES UNLESS OTHERWISE SPECIFIED DEC FRACTIONS ANGLES .X ± .06 .XX ± .025 ± 1/16 ± 1° .XXX ± .010		EICHENAUER INC. 292 Sunapee St., Newport, NH 03773 TEL: 603-863-1454 FAX: 603-863-1248 	
APPROVALS DRAWN S. HEBERT CHECKED DATE 5/13/03		TITLE FLANGED IMMERSION HEATER 208V 24KW 3PH DWG. NO. 300474H REV. 2	
SCALE 1:1		SHEET 2 of 2	