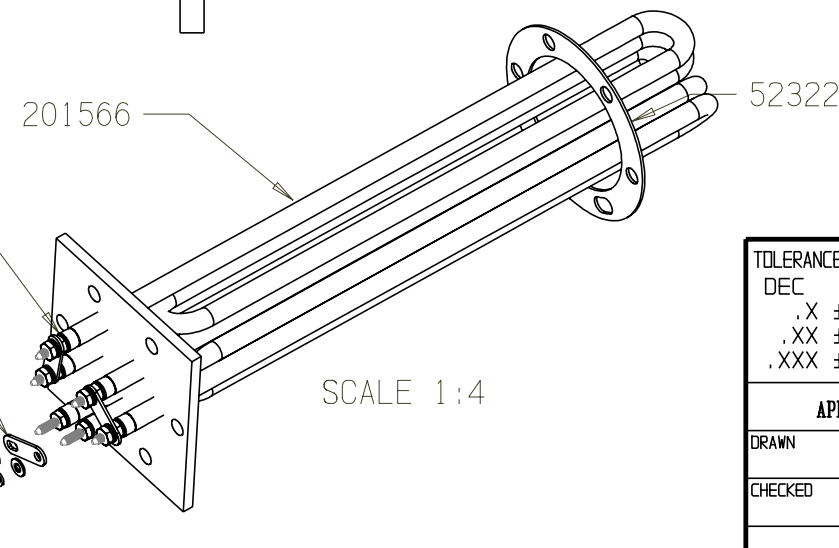
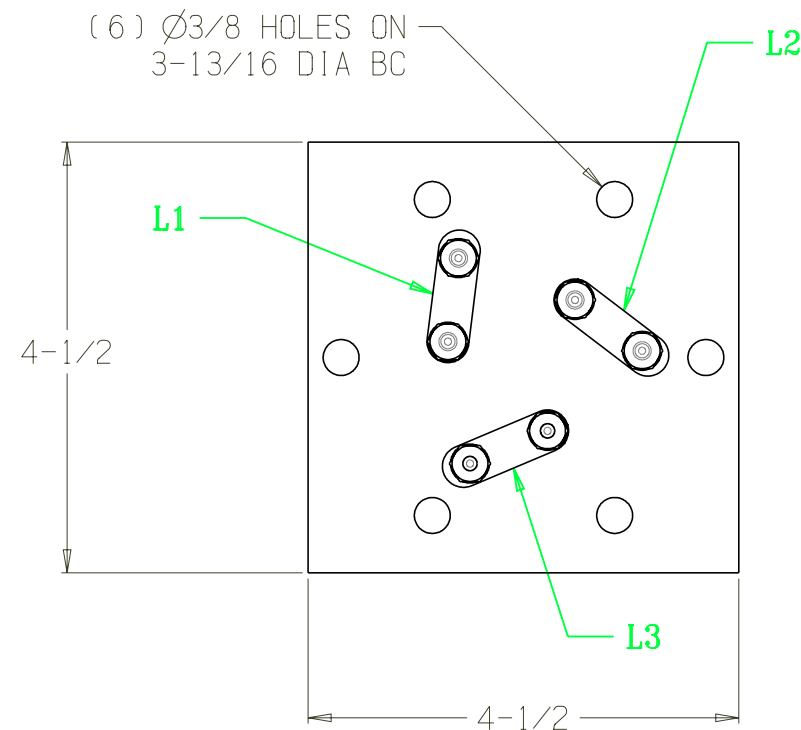
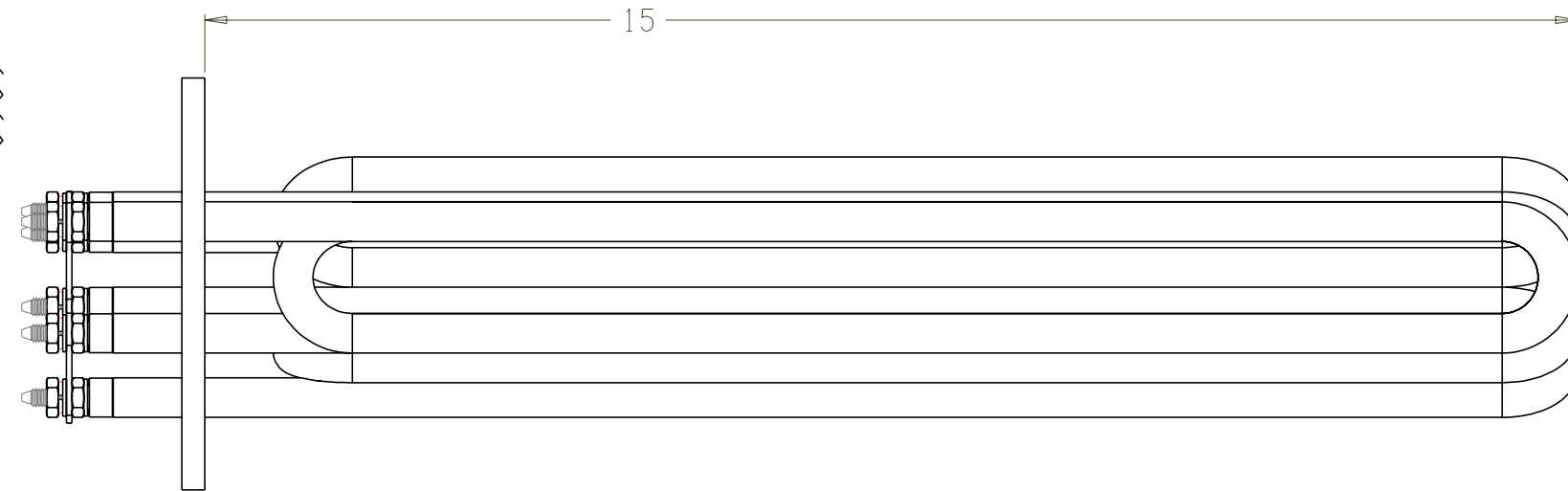


THIS DOCUMENT AND THE DATA DISCLOSED HEREIN OR HEREWITH IS NOT TO BE REPRODUCED, USED, OR DISCLOSED IN WHOLE OR IN PART TO ANYONE WITHOUT THE PERMISSION OF EICHENAUER, INC.

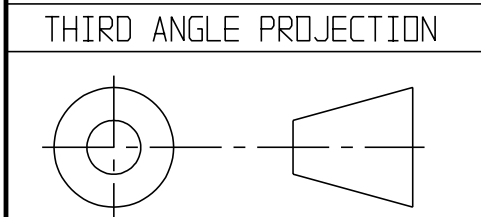
REVISIONS			
LTR/NO	DESCRIPTION	DATE	APPROVED
1	PRODUCTION RELEASE	3/08/16	SJH

NOTES:


1. DIMENSIONS IN INCHES
2. FLANGE MATERIAL: STEEL
3. SHEATH MATERIAL: STAINLESS STEEL
4. TERMINAL PINS: #10-32 WITH NUTS & WASHERS AS SHOWN. TOP NUTS TIGHTENED TO 25 IN-LBS
5. COLD RESISTANCE: $30.1 \Omega \pm 10\%/-5\%$ (28.7 - 33.1) PER TUBE
6. BUSS TO BUSS RESISTANCE: $20.1 \Omega \pm 10\%/-5\%$ (19.1 - 22.1) WHEN ASSEMBLED
7. SHEATH WATT DENSITY: 97 W/IN²
8. UL FILE: E76225 MODEL: 950-30-11
9. WIRING DIAGRAM: WDG-006



- 12X 52469
- 3X 52655
- 12X 52325
- 6X 52470
- 12X 50471



TOLERANCES UNLESS OTHERWISE SPECIFIED	
DEC	FRACTIONS ANGLES
.X $\pm .06$	
.XX $\pm .025$	$\pm 1/16$ $\pm 1^\circ$
.XXX $\pm .010$	
APPROVALS	DATE
DRAWN S. HEBERT	3/08/16
CHECKED	

EICHENAUER INC. <small>292 Sunapee St., Newport, NH 03773 TEL: 603-863-1454 FAX: 603-863-1248</small>				
FLANGED BOILER HEATER 480V 22.5KW 3PH				
TITLE	SIZE	FSCM NO.	DWG. NO.	REV.
	B		300641H	1
SCALE	1:2		SHEET	1 of 1